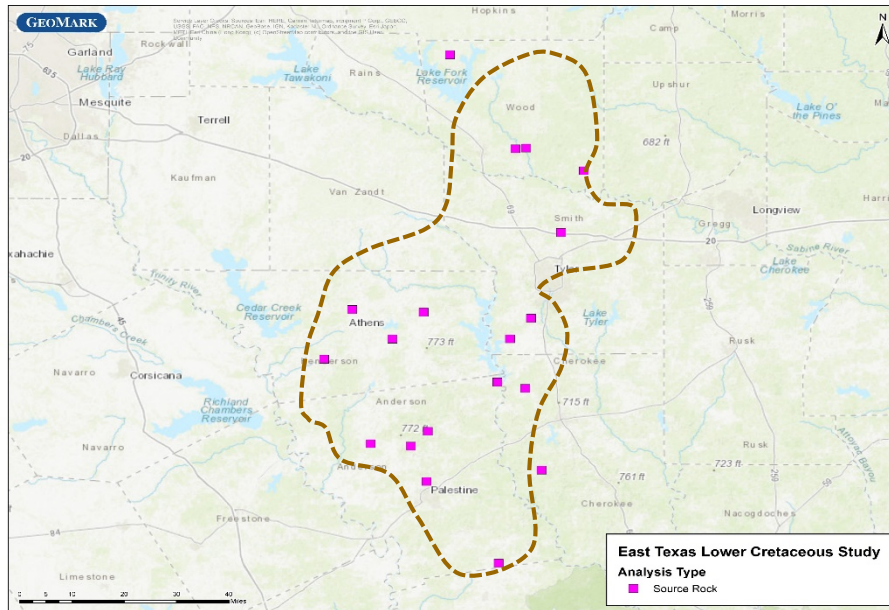


East Texas Lower Cretaceous Petroleum Systems Study

Detailed Analysis of Source Rock and Oil and Core Extract
Analyses from the Lower Cretaceous of East Texas



GeoMark Research is offering a regional study of the oil and source rock geochemistry of the East Texas Basin. The purpose of this study is to identify and evaluate the Lower Cretaceous source rock(s) responsible for the oils currently being produced across much of the East Texas Basin. In its entirety, this study involves the detailed analysis of over 50 crude oil samples and the TOC and pyrolysis analysis of over 2,500 core and cuttings samples from 25 wells. The analyzed rock samples were collected over from the Buda and down to the well TD. Wells were specifically target in the deepest part of the basin to confirm depositional facies and present-day maturity levels. This also allowed for a direct source to oil correlations procedure. This interpretive assessment is finished and ready for delivery as a PDF and ArcGIS product. Data used in this interpretation is available for a separate subscription fee.

Key observations from this study include:

- New source to oil correlation of previously unknown oil family.
- High resolution geochemical core analysis yielding detailed source/reservoir relationship and oil mobility implications.
- Detailed thermal maturity evaluation of a salt withdrawal basin showing the impact on oil generation and potential resource play targets.
- Detailed source rock extract analysis and correlation with produced oils for applications to reservoir geochemistry and production allocation.

Well Count: 26
Source Rock Samples: 2327
Oil Samples: 50

For Additional Information Contact:

Telephone: +1 281/856-9333
E-mail: info@geomarkresearch.com