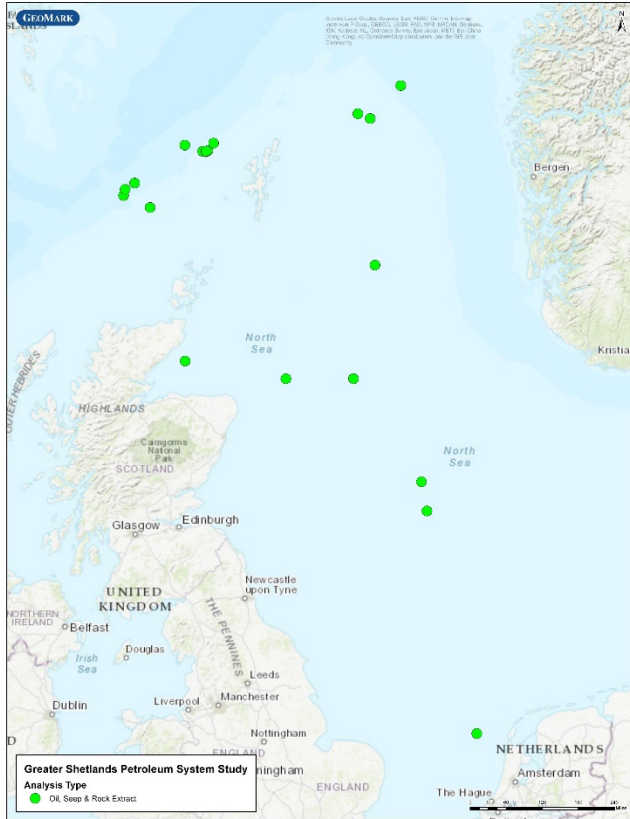


## Greater Shetlands Petroleum System Study

### Crude Oil and Source Rock Geochemistry and Thermal Modeling of the West of Shetlands



GeoMark Research has completed an evaluation of the petroleum system of the Faeroe and West Shetland Basins. This study uses advanced geochemical analysis to determine source rock facies, maturity, and charge history to calibrate several 1D models and provide a complete analysis of source presence, quality, charge timing and regional migration focus of the basin. This work is based on a proprietary dataset of 23 fluid samples and 31 source rock samples from 23 wells. The petroleum system of the west Shetlands is remarkable, with many different sources and charge histories being present. This study challenges traditional beliefs of oversimplified migration and supports more realistic scenarios with geochemical evidence and basin models.

Key observations from this analysis include:

- Discussion of complicated charge history with most likely scenario established and documented with geochemical and tectonic data.
- Maps of oil family distribution, tied to 1D model scenarios.
- Ranking of oil types by commercial characteristics, such as wax and sulfur content for economic modeling.

The report and data for this study is available for immediate delivery. The purchase price includes a perpetual license to all study documents and a 3-year subscription to the raw dataset.

**Well Count: 23**  
**Oil Samples: 31**

**For Additional Information Contact:**

**Telephone: +1 281/856-9333**  
**E-mail: [info@geomarkresearch.com](mailto:info@geomarkresearch.com)**