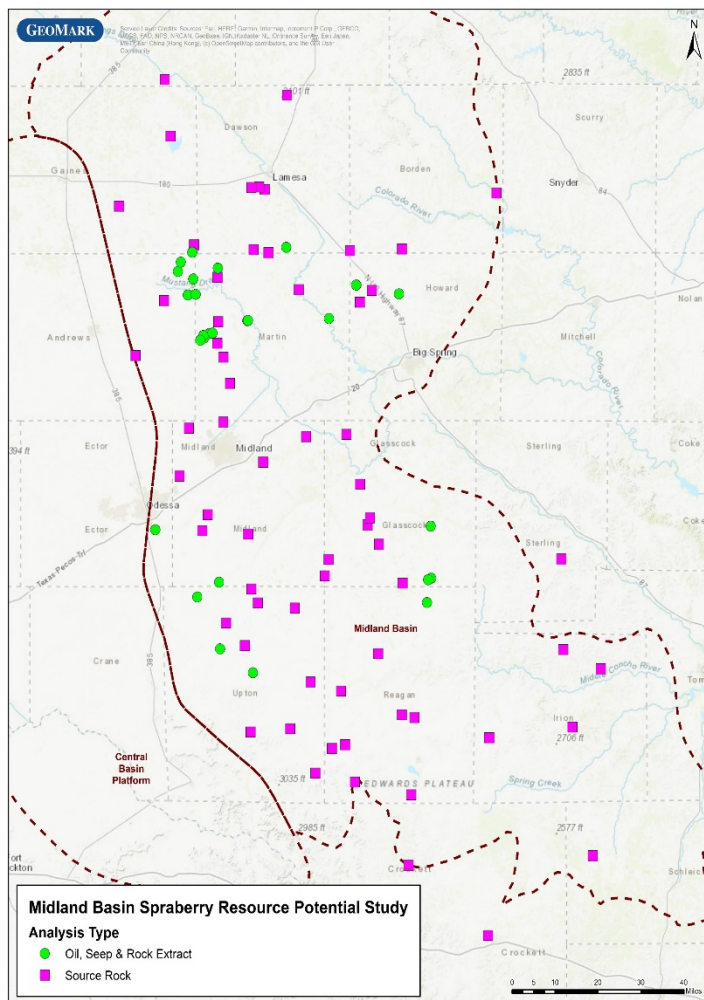


Midland Basin Spraberry Resource Potential Study

Detailed Analysis of Source Rock and Oil Samples from the Spraberry Formation in the Midland Basin



GeoMark Research has completed a detailed resource potential study of the Spraberry Formation of the Midland Basin with the purpose of identifying and delineating its organic richness, thermal maturity and hydrocarbon-in-place. This rock analysis is then compared with Spraberry-reservoir oils and those from other nearby producing wells to determine the interval's effectiveness as a self-sourcing play.

This work is based on a proprietary dataset of more than 100 fluid samples and 3,000 source rock samples from 300 wells. This assessment is finished and ready for delivery as a PDF and ArcGIS product. The purchase price includes a perpetual license to all study documents and a 3-year subscription to the raw dataset.

Key observations from this analysis include:

- Criteria for determining in-situ oil generation vs migrated fluids and estimation of oil in place.
- Thermal maturity maps to delineate in-situ generated play potential.
- Fluid property variations (API/GOR) related to migration of fluids from other, deeper sources.

Well Count: 64
Oil Samples: 30
Source Rock Samples: 1899

For Additional Information Contact:
Telephone: +1 281/856-9333
E-mail: info@geomarkresearch.com