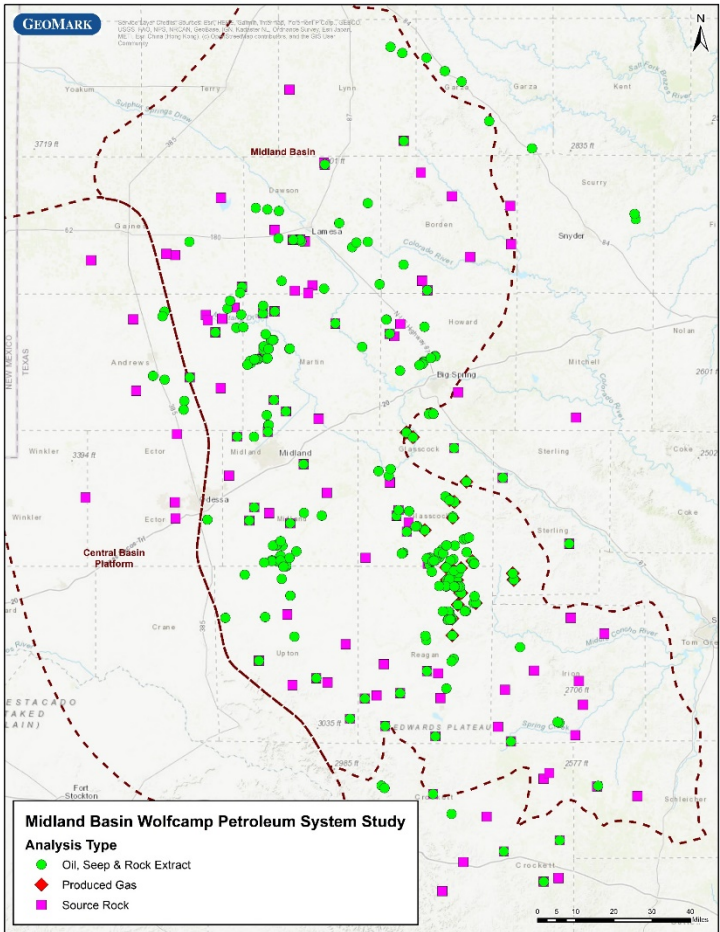




Midland Basin Wolfcamp Petroleum Study

Detailed Analysis of Source Rock and Oil Samples from the Wolfcamp Formation in the Midland Basin



GeoMark Research has completed a detailed petroleum system study of the Wolfcamp Formation of the Midland Basin. This study refines the hydrocarbon potential beyond the regional scale to aid in production optimization/missed pay identification and geochemical allocation studies. This geochemical character of the subfamilies of the Wolfcamp A, B, C, D and Cline units are clearly defined, and the evidence for local versus migrated hydrocarbon is shown. This differentiation is key to predicting variations in fluid properties.

This work is based on a proprietary dataset of more than 300 fluid samples and nearly 3,000 source rock samples from 105 wells. This assessment is finished and ready for delivery as a PDF and ArcGIS product.

Key observations from this analysis include:

- Criteria for Wolfcamp subfamilies and related organofacies.
- Thermal maturity definitions of gas/condensate vs black oil demonstrating extent of migration (if any).
- Fluid property variations (API/GOR) related to migration of fluids from other, deeper sources.

The purchase price includes a perpetual license to all study documents and a 3-year subscription to the raw dataset.

Well Count: 105
Oil Samples: 362
Gas Samples: 22
Source Rock Samples: 2926

For Additional Information Contact:
Telephone: +1 281/856-9333
E-mail: info@geomarkresearch.com