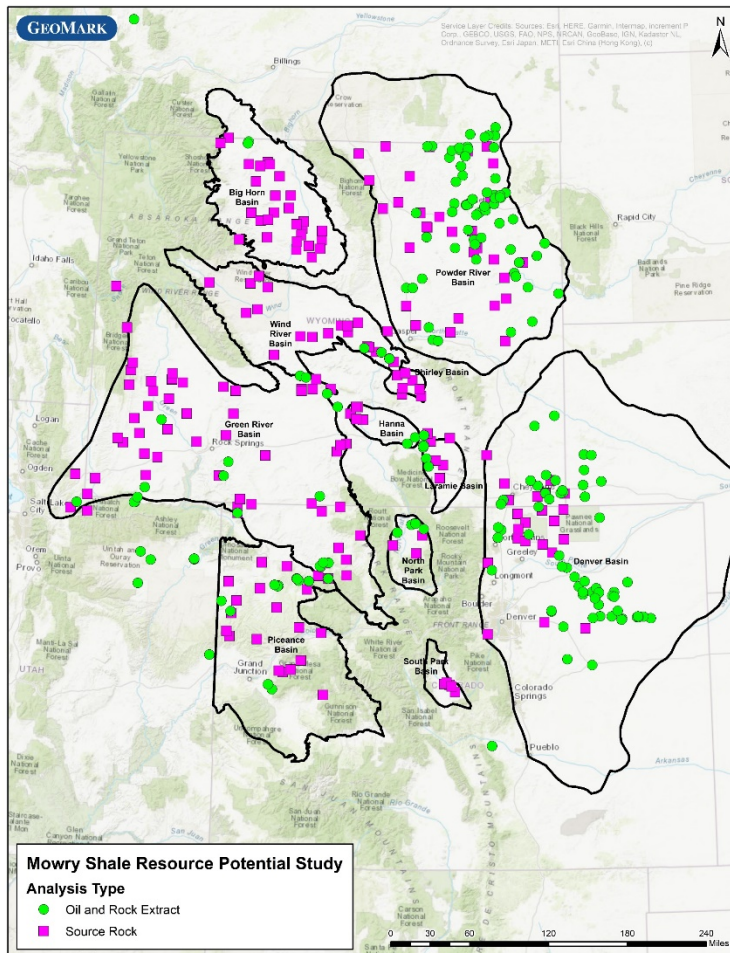


## Mowry Shale Resource Potential

Application of Oil and Source Rock Analysis for Development of the Mowry Shale



GeoMark Research has completed an analysis of produced oil and source rock samples from the Mowry Shale across 11 basins in the Rocky Mountain region. With this proprietary dataset of 216 crude oil samples and 833 rock samples from over 200 wells, GeoMark has completed a comprehensive assessment to aid in execution of development programs of this prolific unit across the entire region.

This interpretive assessment is ready for delivery as a PDF and ArcGIS product. Data used in this interpretation is available for a separate subscription fee.

Key observations include:

- Restored source rock parameters (TOC, HI) to yield more accurate reservoir estimates for in-situ generation and total oil generative potential.
- Sensitivity analysis of source rock interpretation to aid in risked resource assessment
- Criteria and description of Mowry oil character vs other oil regional oil families

Please contact GeoMark research for more information.

**Well Count: >200**  
**Oil Samples: 216**  
**Rock Samples: 833**

**For Additional Information Contact:**

**Telephone: +1 281/856-9333**  
**E-mail: [info@geomarkresearch.com](mailto:info@geomarkresearch.com)**