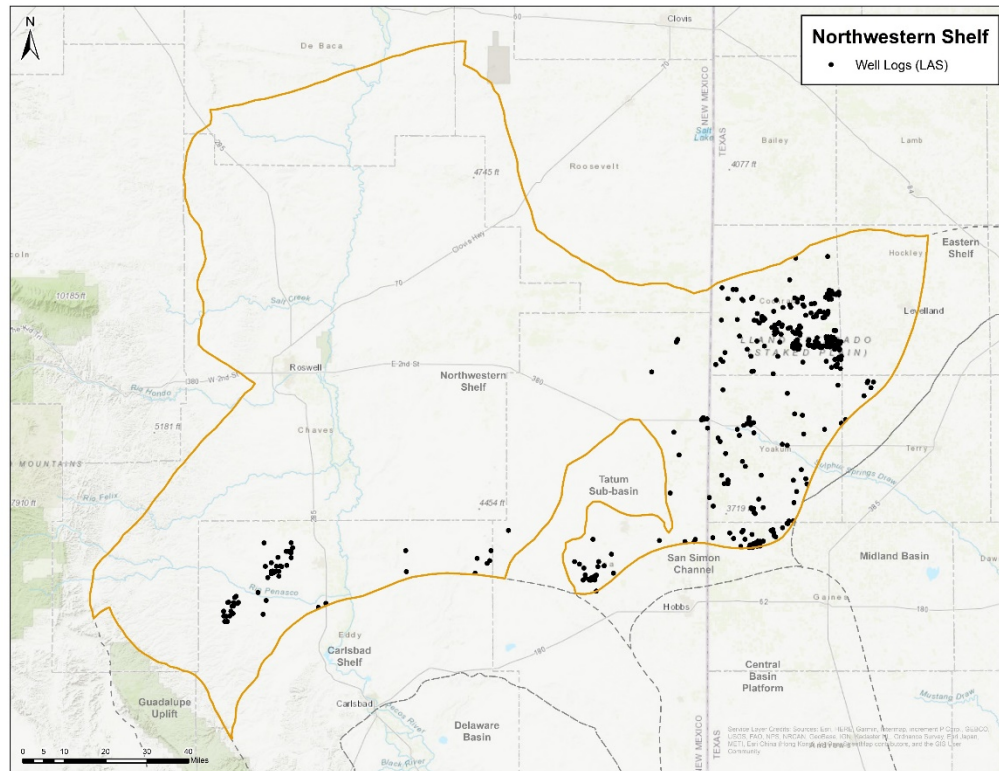


Northwestern Shelf Petrophysical Study

A Regional, Multi-Well Evaluation of Petrophysical Properties
Across the Stratigraphic Column



GeoMark Research has completed a petrophysically focused study across the stratigraphic column of the Northwestern Shelf that aids in exploration, appraisal, development, and post-production life cycle application. The goal of the study was to perform a basic petrophysical evaluation on a significant number of wells (>200), which cover the region spatially across lithologic, maturity, and pressure variation, as well as across the vertical stratigraphic column.

- Constrain Petrophysical Properties for input into Economic Analysis
- Adjust, Add or Withdraw upside targets
- Impact reservoir engineering single well and multi well models
- Quick acreage assessment similarities or differences that drive the associated assigned value for potential ROI
- In place versus recoverable estimates support and validation
- Geological, Geochemical and Petrophysical Mapping

This interpretive assessment is finished and ready for delivery as .las, PDF and ArcGIS products. Data used in this interpretation is available for a separate subscription fee. Please contact GeoMark research for more information.

Well Count: >200

For Additional Information Contact:

Telephone: +1 281/856-9333
E-mail: info@geomarkresearch.com