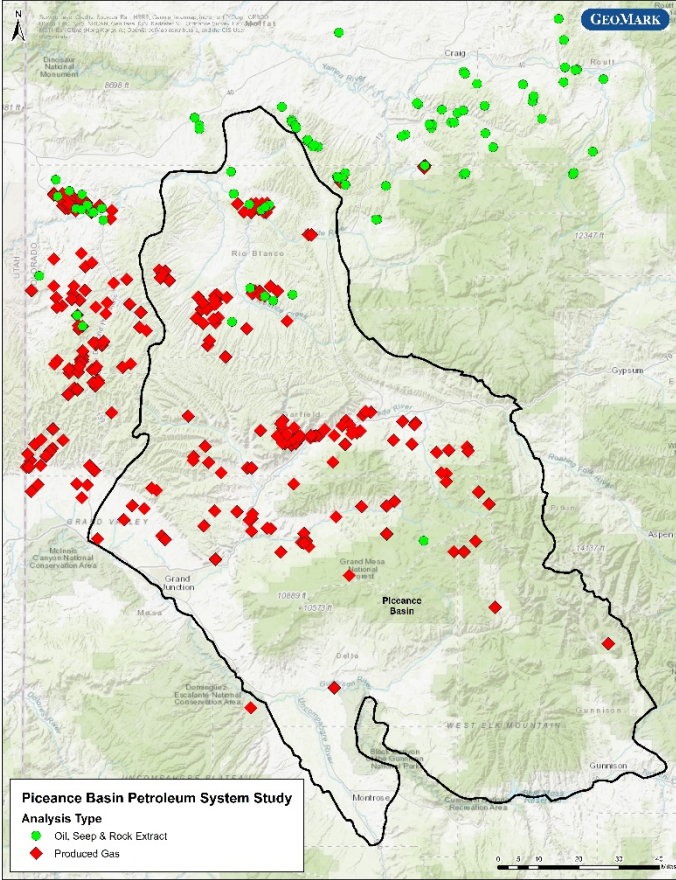




Piceance Basin Petroleum System Study

Geochemistry and Exploration Significance of Crude Oils and Natural Gases from the Piceance Basin



GeoMark Research is conducting a regional gas study in the Piceance Basin. This study provides a Phase II extension of the Regional Petroleum System Study GeoMark conducted in the Piceance Basin in 2005 and concentrates on detailed analyses of both conventional and unconventional (shale gas, coal bed gas, and tight gas including basin centered gas) accumulations.

Key conclusions from this study include:

- Determined the number of distinct petroleum systems operating in the basin and provides evidence,
- Correlates geochemistry of produced oil samples to the proven petroleum systems to define effective extent.
- Identifies missing and undervalued areas of proven plays as well as possible under-explored plays.

This interpretive assessment is finished and ready for delivery as a PDF and ArcGIS product. Data used in this interpretation is available for a separate subscription fee. Please contact GeoMark research for more information.

Samples: 115 Oils
318 Gases
370 Total Wells

For Additional Information Contact:
Telephone: +1 281/856-9333
E-mail: info@geomarkresearch.com