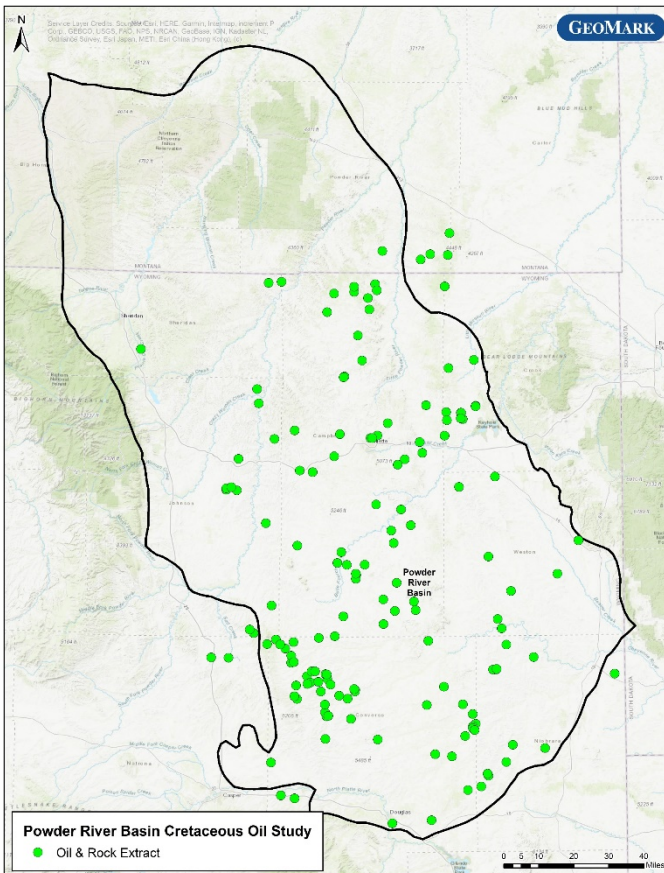


## Powder River Basin Cretaceous Oil Assessment

### Detailed Interpretation of Crude Oil Character from Cretaceous Formations



GeoMark Research has completed a detailed interpretation of oils from the Cretaceous reservoirs of the Powder River Basin. Designed to aid in development and exploitation activities, this work provides an assessment of the raw data, defines the significant source rocks and highlights missed opportunities and infill targets. In total, the analysis of 165 crude oil samples were incorporated.

This interpretive assessment is finished and ready for delivery as a PDF and ArcGIS product. Data used in this interpretation is available for a separate subscription fee. Please contact GeoMark research for more information.

Based on this dataset, GeoMark determined the most significant source rocks, their effective extent and range of fluid quality. Key observations include:

- Identification of 2 major oil families with subfamily definitions based on oil quality.
- Delineation of effective extent of charge patterns of key source rocks.
- Proprietary advanced maturity assessment that predicts fluid quality and API variability.

**Well Count: 163**  
**Oil Samples: 165**

**For Additional Information Contact:**

**Telephone: +1 281/856-9333**  
**E-mail: [info@geomarkresearch.com](mailto:info@geomarkresearch.com)**