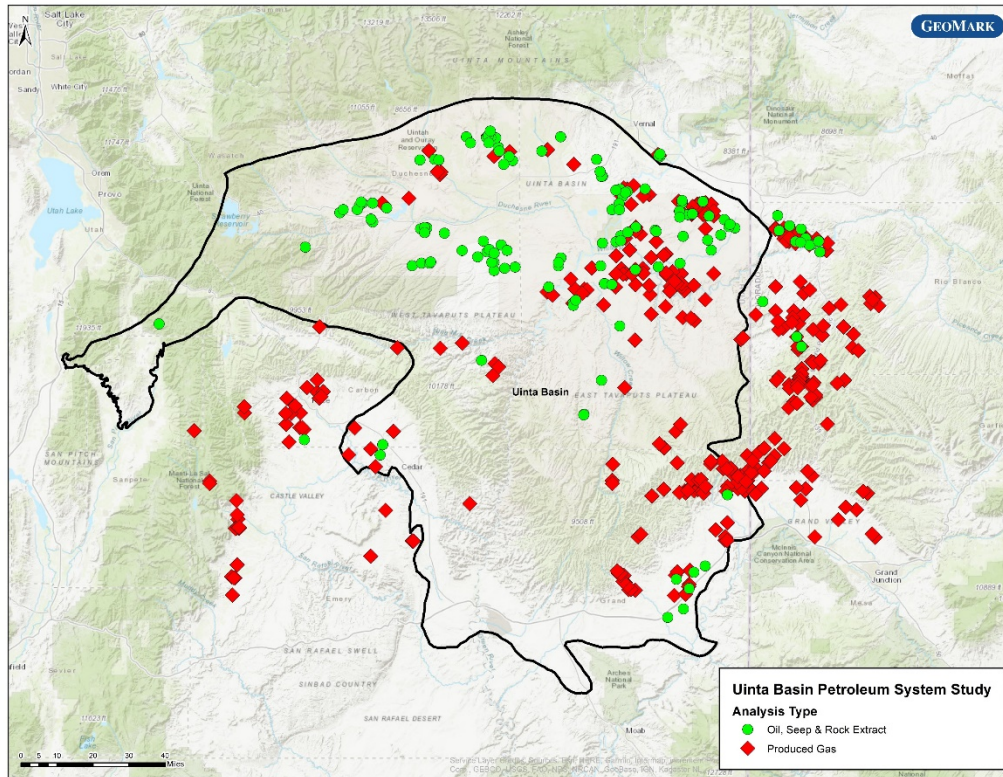


Greater Uinta Basin Petroleum System Assessment

Fluid Character Interpretation of Oil and Gas Samples from the Uinta Basin



GeoMark Research has completed a petroleum system assessment of the Uinta Basin to aid in development and exploitation activity. This work provides an assessment of both the conventional and unconventional (shale gas, coal bed methane, tight oil) potential of the basin. In total, analysis of 179 crude oil samples and 389 gas samples was completed.

Based on this dataset, GeoMark determined the most significant source rocks, their effective extent and range of fluid quality. Key observations presented include:

- Identification of 6 oil families with distinct criteria and assigned to known source rocks,
- Discussion of sub-families that tie to maturity and facies differences that yield variable oil quality,
- Maps that show overlapping petroleum systems and areas for multizone resource assessment.

This interpretive assessment is finished and ready for delivery as a PDF and ArcGIS product. Data used in this interpretation is available for a separate subscription fee. Please contact GeoMark research for more information.

Well Count: >400
Oil Samples: 179
Gas Samples: 389

For Additional Information Contact:

Telephone: +1 281/856-9333
E-mail: info@geomarkresearch.com