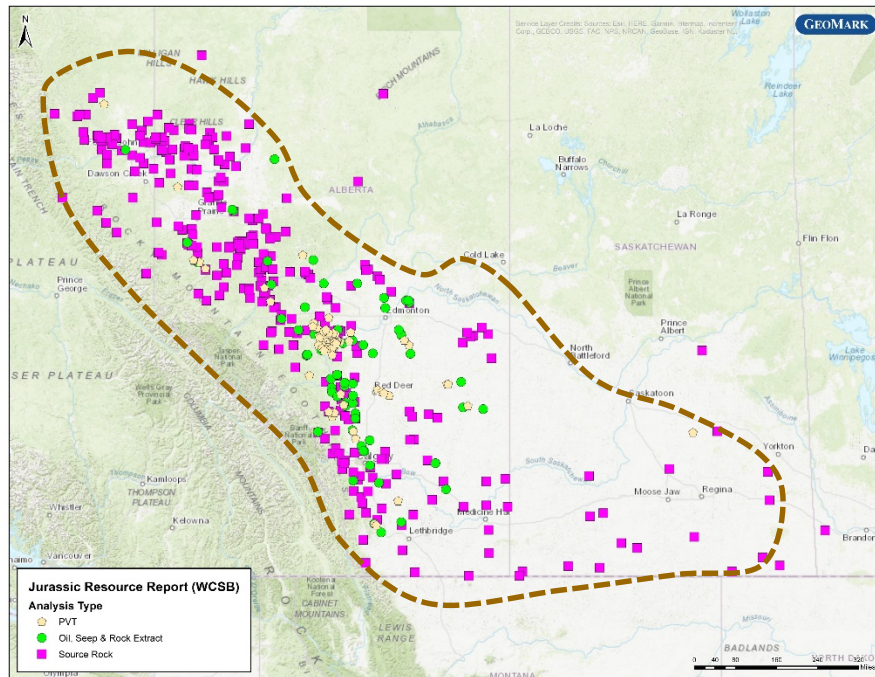


Jurassic/Cretaceous Resource Potential Study

Integrated Geochemistry and PVT Analysis from the
Jurassic & Cretaceous sections of Western Canada



GeoMark is conducting a series of formation specific studies intended to assess the resource potential of the organic-rich units across western Canada. Past oil work, included in these studies, has identified numerous discrete source units that are active within the greater Western Canadian Basin. This particular study evaluates the resource potential of the Jurassic/Cretaceous section, including the Nordegg, Viking, and Second White Specks Formations. In its entirety, the study involves the source rock analysis of over 2,500 samples from over 300 wells. These data will be integrated with the detailed analysis of a 78 oil samples and 88 PVT reports.

This study provides the following impact to exploration and exploitation programs:

- Evaluation of fluid families in the context of the Western Canada Sedimentary Basin as well as locally for production trends
- Oil to source rock correlations and criteria to establish migration vs insitu generation
- Maps of important basin modeling inputs such as pressure, temperature, and source rock quality.
- Integration of PVT analysis with geochemistry to establish fluid quality trends for reservoir modeling inputs.

All measured data is accessible for delivery. All other products will be delivered in ARCGIS format, and a pdf of an interpretative report.

Source Rock Analyses: >2,500
Oil Samples: 78
PVT: >80

For Additional Information Contact:

Telephone: +1 281/856-9333
E-mail: info@geomarkresearch.com